

# FILLEY PARK

BLOOMFIELD



# Filley Park Restoration

Bond referendum proposal for  
Completion of park restoration improvements

# A Rich History

To the right is a replica of the 'Filley Park History' interpretive sign, which is located near the bridge behind the parking lot at the park. The sign was commissioned, and text for the sign developed, by the Filley Park Committee. The sign theme and layout were created by Ravenmark, LLC of Berlin, VT.

The history interpretive sign is one more good reason to visit **Filley Park!**

# FILLEY PARK

BLOOMFIELD



**In 1910**, Alfred N. Filley donated 6½ acres of hillside woodland to the Bloomfield Village Improvement Association. In **1930**, Alfred Filley's nephew and niece donated an additional 5 acres of meadow, extending Filley Park across Wash Brook to Tunxis Avenue. The park reached its current size of 17 acres through six additional property acquisitions by the Association.

## From Land to Parkland

Through the **1930s**, the basic form of the park was created. Trees were cleared, the original dam was constructed, the pond dug behind the dam, and a new bridge was installed. Funding came primarily from federal work programs, with supplemental funding provided by the Town. In **1942**, the western brook channel was dug, creating the island. In **1960**, the Town took over maintenance of the park and assumed full ownership in **1978**. From **1960 to 1980** the Town made additional improvements, including a new concrete dam, pond dredging and edging, bridge replacements, drainage, and the parking lot. The park persisted through many natural disasters. Three in particular, the **1916** chestnut tree blight, the **1938** hurricane and the Halloween ice storm of **2011**, did significant damage to the park's trees.

## A Park and a Community Unite

Throughout its history, Filley Park contributed to the community and the community, in turn, contributed to the park. In **1932**, many citizens and town organizations donated trees and shrubs, including an oak tree donated by elementary students to honor George Washington. In **1935**, with the assistance of a number of volunteers, the Town celebrated Connecticut's Tercentenary at the park. At a dedication ceremony in **1938**, the Filley family was honored and the Village Improvement Association's 50<sup>th</sup> Anniversary was observed. Filley Park has hosted Easter egg hunts, fishing lessons, nature walks, and many other gatherings large and small.

Ice skaters have flocked to Filley Pond whenever conditions allowed. The first of several winter carnivals was held in early **1959**. The main event was to be an ice skating performance. As the date approached, the dam crumbled and the pond disappeared. The community came together to rebuild the dam and bring back the water, and the carnival went on as planned. This event attracted over 2,000 spectators from all over New England.

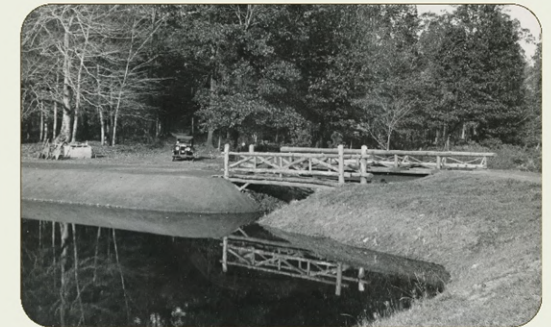


**Photos left to right:** Aerial view of Bloomfield Center, pre 1934, eastern portion of Filley Park, upper left; Ice skaters on Filley Pond, 1957; Washington Oak planted in 1932; Entrance to Filley Park from Tunxis Avenue, 1935. Photos courtesy of Wintonbury Historical Society.

**Nature's Gift** Filley Park is a place that has sparked memories that span generations. It is a place for first dates and play dates. A place for fishing derbies and winter carnivals. A place to picnic or find peace among the trees.



The process of reinvigorating Filley Park began in **2008**. By **2011**, with the help of the Filley Park Committee – a team of dedicated volunteers – a clear vision for the park's renovation was in place. In **2015**, the streetscape phase of construction was completed. Stream and pond improvements were completed in **2019**. Additional phases of the renovation will continue in the future. With the continued support of Town leaders, current and former residents, local businesses, student volunteers, and the Committee, Filley Park will continue to evolve as an enduring asset forever rooted in the Bloomfield community.



# FILLEY PARK

BLOOMFIELD

Filley Park was in decline



Something  
had to be  
done

# FILLEY PARK

BLOOMFIELD

Planning efforts began in 2008 with the creation of the Filley Park Committee.

A design consultant (F & O) was engaged in 2010.

The design concept (at left) was developed; and approved by Town Council in 2012.

Environmental / dam permits were obtained in 2014 based on design development drawings.

With permits in hand, construction could proceed ... in a phased manner as funding became available.



# FILLEY PARK

BLOOMFIELD

Streetscape and front plaza  
were completed in 2016



Funding  
provided by  
Town,  
CTDEEP,  
Saxton Trust

# FILLEY PARK

BLOOMFIELD

Stream & Pond restoration was completed in 2019



Funding  
provided by  
Town &  
CTDEEP

# FILLEY PARK

BLOOMFIELD

Arboretum Island will be completed in June 2021

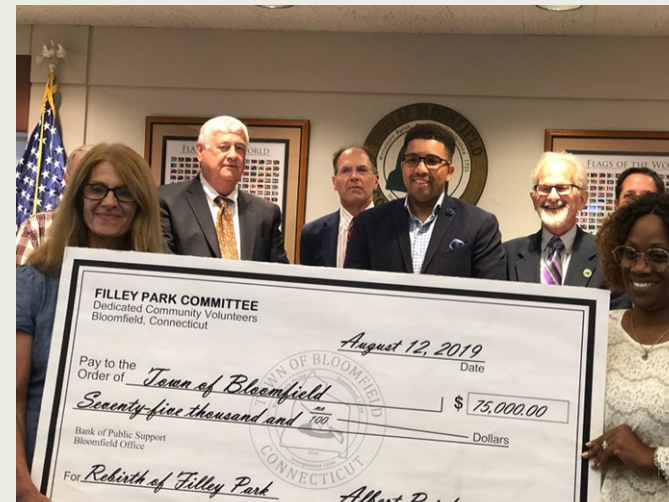


Funding  
provided by  
Town &  
Community  
Donations  
through  
Filley Park  
Committee

# FILLEY PARK

BLOOMFIELD

## Community Involvement!



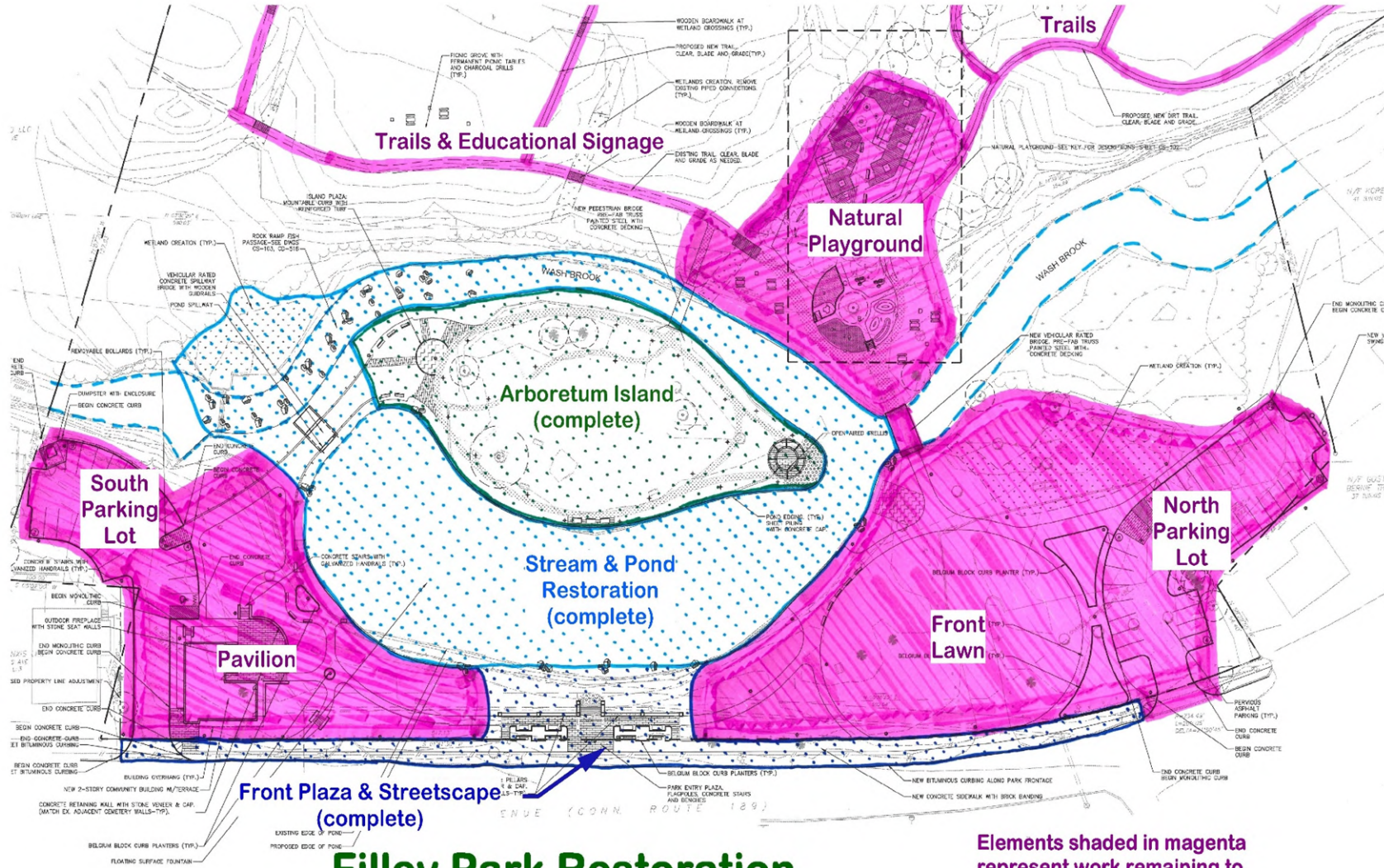
Over  
\$200,000  
privately  
contributed  
to park  
restoration

**So Far!!**



# FILLEY PARK

BLOOMFIELD



## Filley Park Restoration Project Elements

Project elements remaining to be completed:

- Natural Playground
- Trails
- Educational Signage
- South Parking Lot
- Pavilion
- Front Lawn
- North Parking Lot
- New walkways for improved connections

# FILLEY PARK

BLOOMFIELD

## Future Elements: Natural Playground



Combats nature  
deficit disorder

Promotes creativity &  
abstract thinking

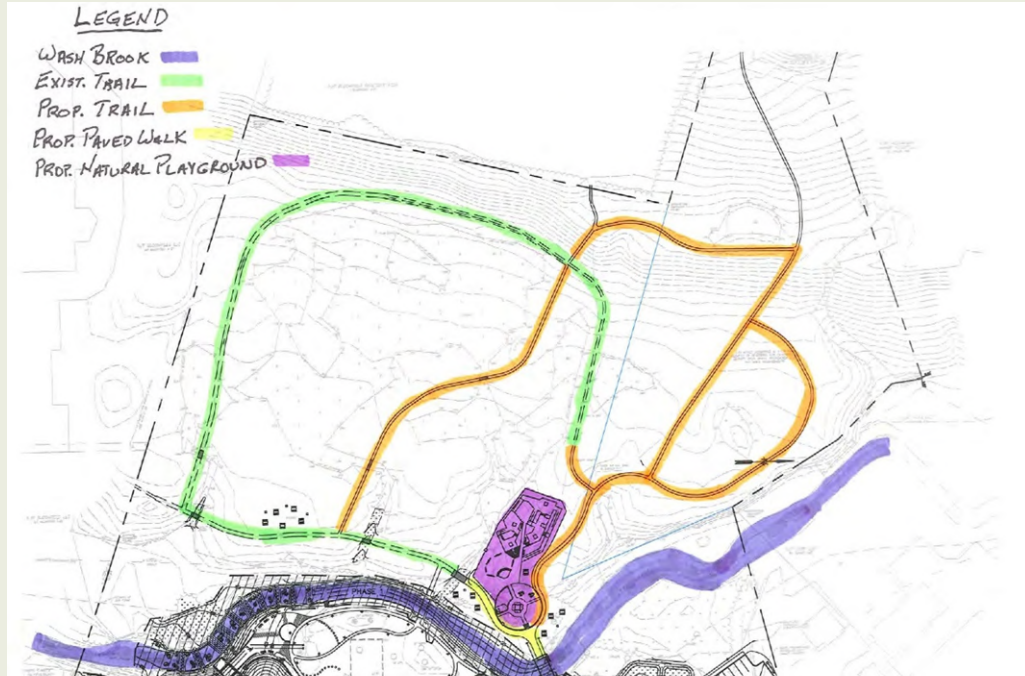
Improves concentration  
& enhances motor skills

# FILLEY PARK

BLOOMFIELD

Future Elements:

New & Enhanced Trails  
& Educational Signage



Over one mile of wooded walking trail in Town Center

Interpretive signs to educate the reader on the wonders of nature being experienced

# FILLEY PARK

BLOOMFIELD

**Future Elements:**

**Parking Lots, Main Bridge,  
Improved Connectivity**



**New parking lots at  
both ends of Park**

**New access bridge  
over Wash Brook**

**Accessible  
connections between  
Park elements**

# FILLEY PARK

BLOOMFIELD

## Future Elements: Pavilion & Front Lawn



Wedding  
Receptions  
Reunions  
Outdoor  
Classroom  
Relaxing in  
the Park

# FILLEY PARK

BLOOMFIELD



## Filley Park Restoration Project Completion Schedule

Activity	2021		2022												2023									
	Nov	Dec	Jan	Feb	Mar	Apr	May	Jun	Jul	Aug	Sep	Oct	Nov	Dec	Jan	Feb	Mar	Apr	May	Jun	Jul	Aug	Sep	
Drawings / Specs / Bid Documents	[Yellow Bar]																							
Bid / Contract Award / PreConstruction					[Yellow Bar]																			
Construction - main bridge / south parking / trails								[Orange Bar]																
Construction - great lawn / natural playground													[Orange Bar]											
Winter Shutdown															[Blue Bar]									
Construction - north parking / educational signs / pavillion																								
Construction - final restoration Project closeout																								[Dark Orange Bar]

# FILLEY PARK

BLOOMFIELD



## Filley Park Restoration Completion Cost Estimate

Main Bridge	\$150,000	A/E/Admin Fees	\$175,000
Playground & Trails	\$230,000	Contingencies	\$245,000
South Parking Lot	\$375,000	Financing Costs	<u>\$125,000</u>
North Parking Lot	\$400,000		
Pavilion	\$300,000	<b>Total Project Cost</b>	<b>\$2,000,000</b>

# FILLEY PARK

BLOOMFIELD



# Filley Park Restoration

**Bringing  
Bloomfield's Jewel  
Back to Life!**

Photo credits:

Dennis Hubbs

Roseanne Azarian

Fuss & O'Neill

Town Staff

Town of West Hartford

Miscellaneous